



# MDM 55

Ø 2.1" soft dome midrange, 8Ω



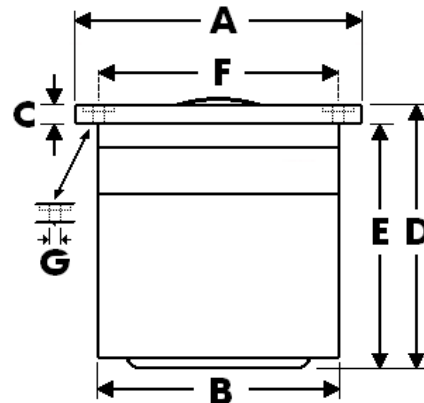
## SPECIFICATIONS

General Data		
Overall Dimensions	HxW/H	87x87/86mm (3.42x3.42/3.38")
Nominal Power Handling (DIN)	P	200W
Transient Power 10ms		1,000W
Sensitivity 2.83V/1M		89.5 dB SPL
Frequency Response		See graph
Dome Type		Acuflex™ hand coated soft dome
Net Weight	Kg	0.27
Electrical Data		
Nominal Impedance	Z	8Ω
DC Resistance	Re	6.3Ω
Voice Coil Inductance @ 1KHz	LBM	0.19mH
Voice Coil and Magnet Parameters		
Voice Coil Diameter	DIA	54mm
Voice Coil Height		6mm
HE Magnetic Gap Height	HE	4mm
Max. Linear Excursion	X	± 1mm
Voice Coil Former		Aluminum
Voice Coil Wire		Hexatech™ Aluminum
Number Of Layers		2
Magnet System Type		Neodymium vented
B Flux Density	B	0.85 T
BL Product	BXL	5.2 N.A
T-S Parameters		
Suspension Compliance	Cms	
Mechanical Q Factor	Qms	1.13
Electrical Q Factor	Qes	1.75
Total Q Factor	Qts	0.68
Mechanical Resistance	Rms	
Moving Mass	Mms	2.8 g
Eq. Cas Air Load (liters)	VAS	
Resonant Frequency	Fs	380 Hz ± 10%
Effective Piston Area	SD	28 cm <sup>2</sup>

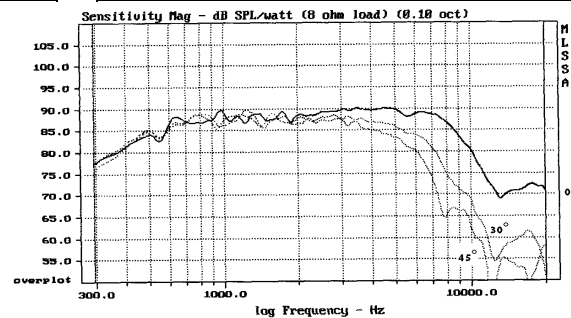
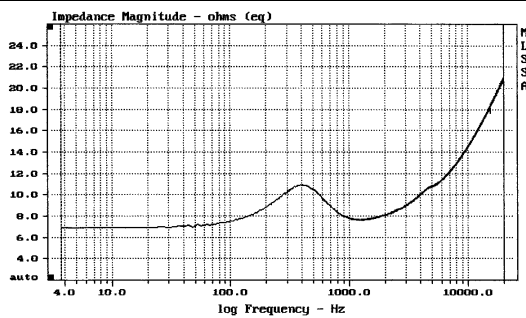
## FEATURES

- \* 2.1" Acuflex™ hand coated soft dome
- \* 2.1" Large Hexatech™ Aluminum voice coil
- \* Internally damped, Aluminum rear chamber
- \* Wide range linear performance
- \* Low resonance point
- \* High power handling

## Unit Dimensions



- A - Square flange HxW 87mm/87mm
- B - Cut out diameter 75mm
- C - Flange thickness 4mm
- D - Overall height 86mm
- E - Rear chamber depth 84mm
- F - Mounting holes location 72mm
- G - 4 Mounting holes, at 90° interval, inner hole diameter Ø 4mm pocket h 2mm, Ø 7mm



Measured on IEC baffle using Bruel & Kjaer 3144 model microphone.

Morel operate policy of continuous product design improvement, consequently specifications are subject to alteration without prior notice.