

EPIQUE

by Dayton Audio

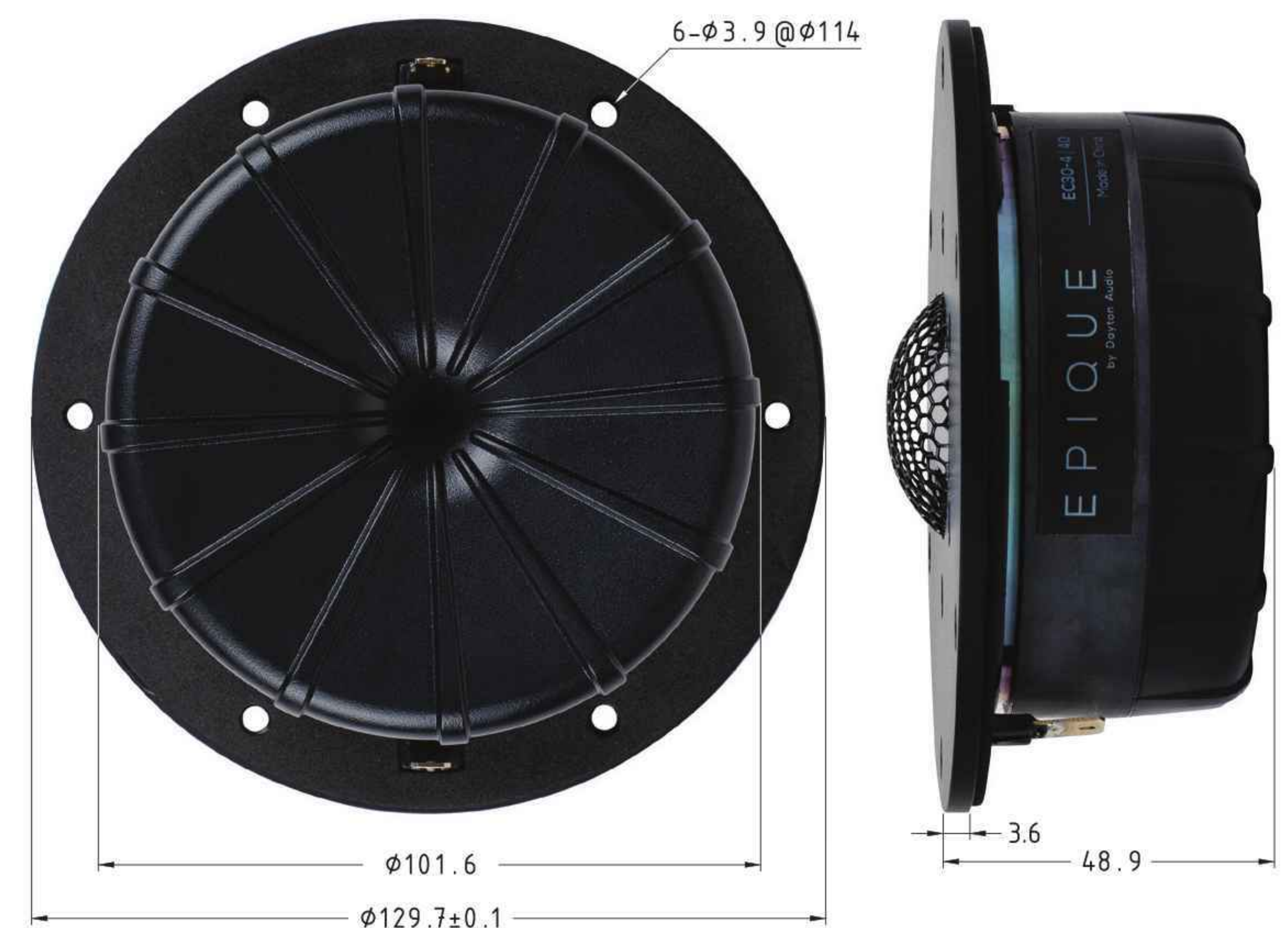
EC30-4

The Dayton Audio Epique EC30-4 Ceramic Dome Tweeter sets a new benchmark for high-resolution audio performance. Built to last, it is designed with meticulous precision and crafted from premium materials to ensure both exceptional sound and long-term reliability. The EC30-4 combines substance with style, featuring a rugged 3.6mm aluminum faceplate and a honeycomb mesh protective grill that deliver durability without compromising elegance. Its advanced ceramic dome construction brings out the finest details in music reproduction, producing crystal-clear highs and unmatched transparency that remain consistent across listening environments.

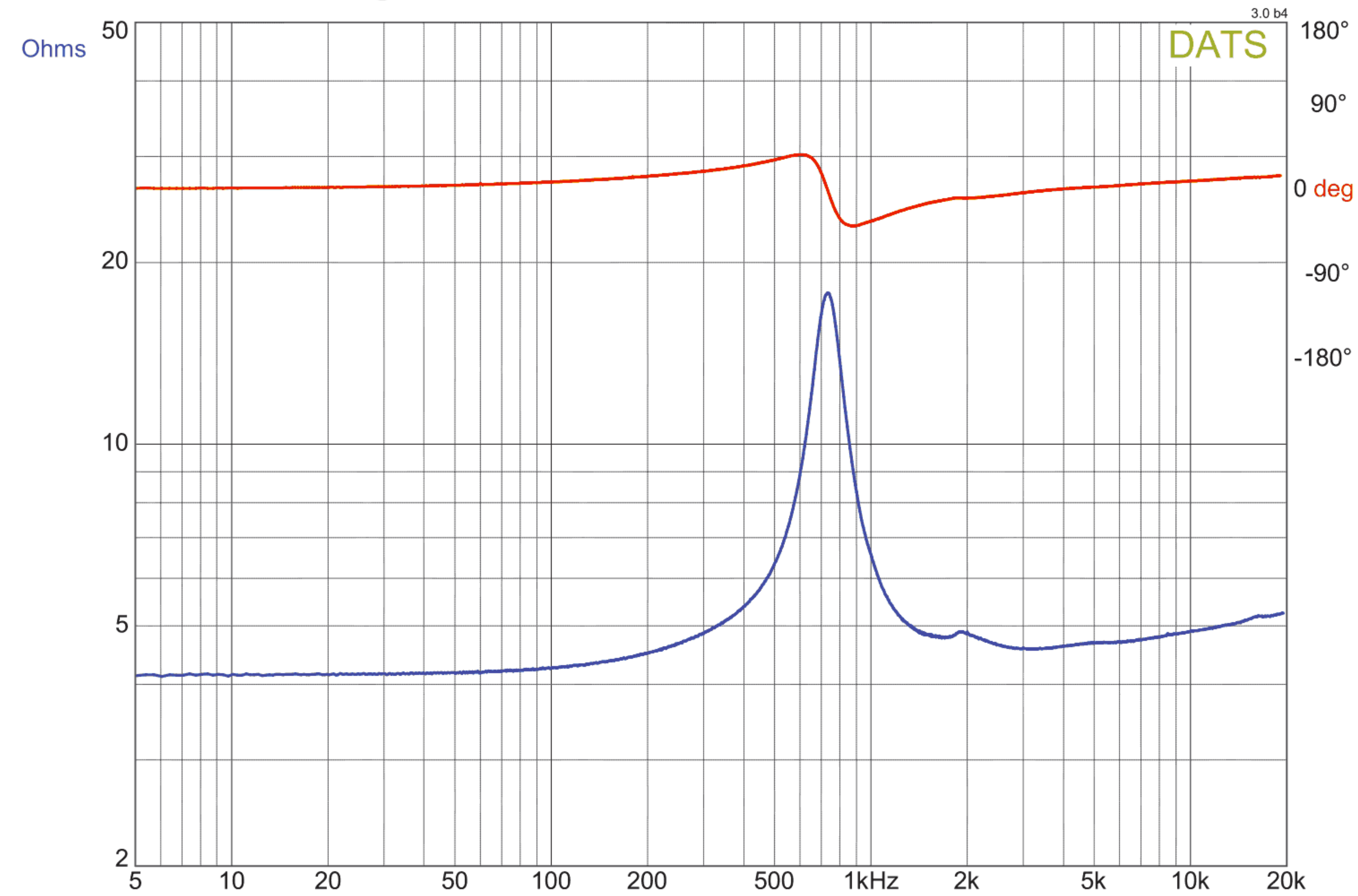
- 30mm aluminum dome reinforced with vapor-deposited ceramic coating for stiffness and accurate piston performance
- Smooth, distortion-free sound extending well past 40 kHz, ideal for high-resolution audio systems
- Precision-engineered back plate and damping materials eliminate internal resonances for maximum transparency
- Copper cap and Kapton former reduce inductance and distortion, enhancing clarity and detail
- Oversized Y35 magnet delivers power and control, while a treated cloth surround ensures long-term performance
- 3.6mm thick aluminum faceplate with honeycomb mesh protective grill for added strength and protection
- Perfect for high-end home audio, studio monitors, and custom loudspeaker designs seeking uncompromised treble performance

PARAMETERS

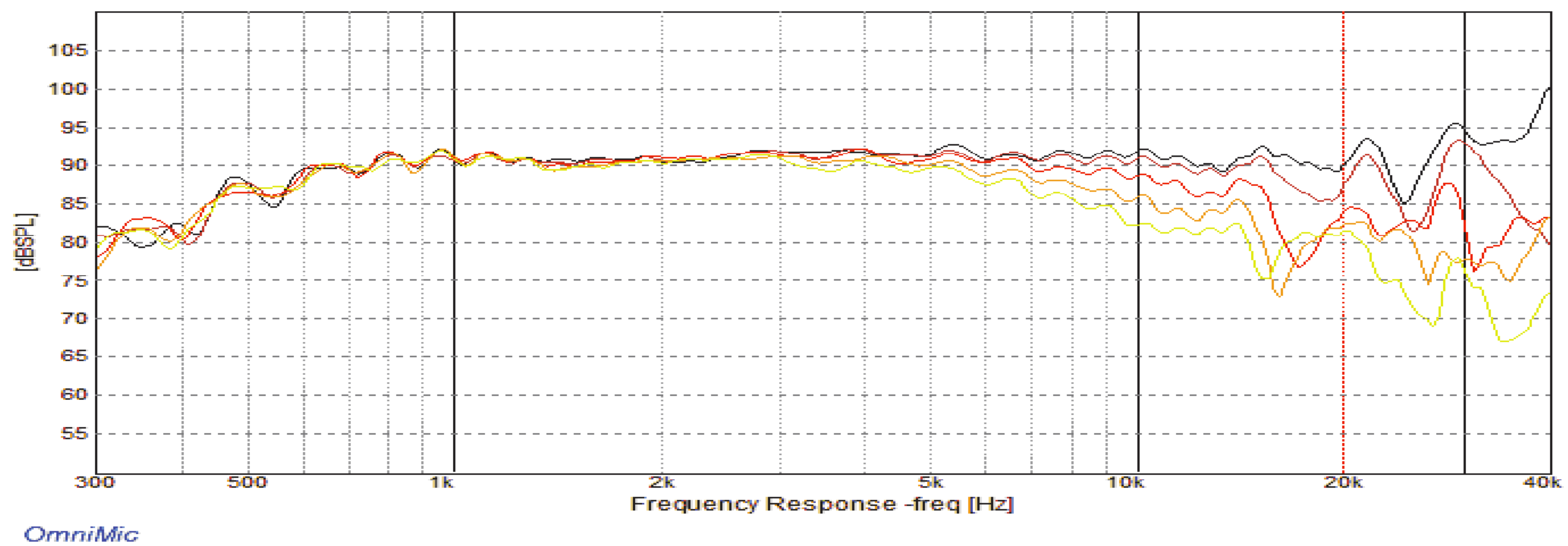
Impedance	4 ohms
Re	4.03 ohms
Le	N/A
Fs	700 Hz
Qms	3.376
Qes	1.163
Qts	0.8651
Mms	N/A
Cms	N/A
Sd	N/A
Vd	N/A
BL	N/A
Vas	N/A
Xmax	N/A
VC Diameter	30 mm
SPL	92 dB @ 2.83V/1m
RMS Power Handling	80 watts
Usable Frequency Range (Hz)	1,000 - 40,000 Hz



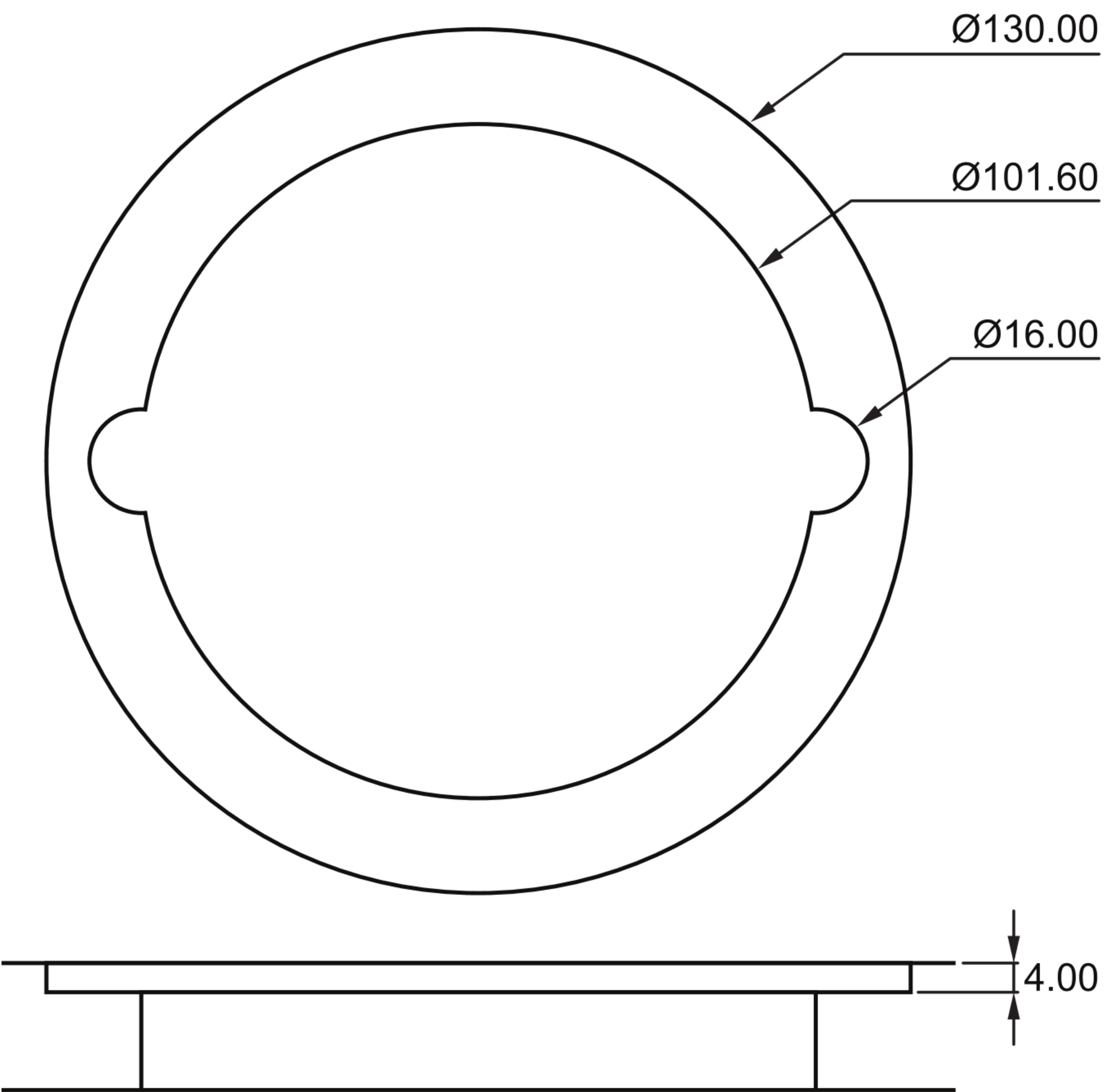
IMPEDANCE



FREQUENCY RESPONSE



RECOMMENDED BAFFLE CUTOUT



All dimensions in millimeters