

C90-6-724

Bass - midrange driver

DOMEMATERIAL: CERAMIC
APPLICATION: BASS - MIDRANGE
NOMINAL DIAMETER: 123.6 mm
SENSITIVITY: 89 dB

MAIN FEATURES :

- FULL FEATURED CELL CONCEPT
- IDEAL ACOUSTICAL CENTER
- NO REFLECTIONS AT THE BACKSIDE
- UNDERHUNG MOTOR DESIGN
- 60 HZ - 6 KHZ IN VENTED BOX

CELL[®]
CONCEPT DRIVER



The C90 - 6 - 724 is a 5 inch bass - midrange driver with ceramic dome, being the first in an entirely new approach to accuton speaker design.

An ideal acoustical center has been achieved, which is identical with our tweeters.

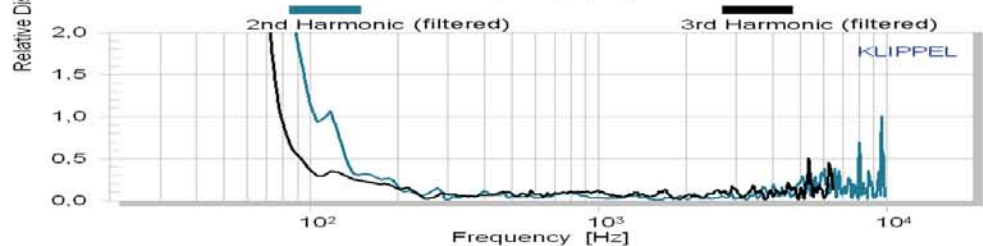
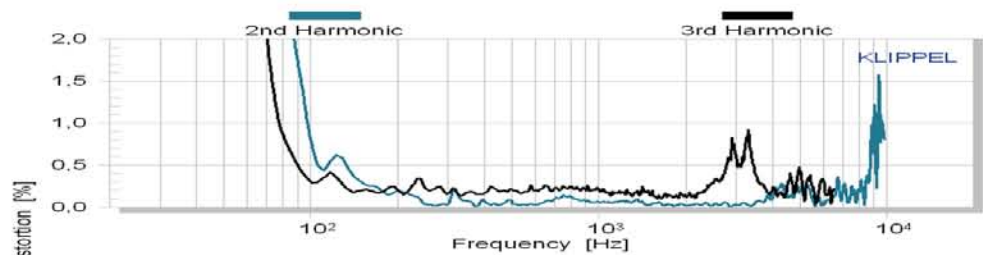
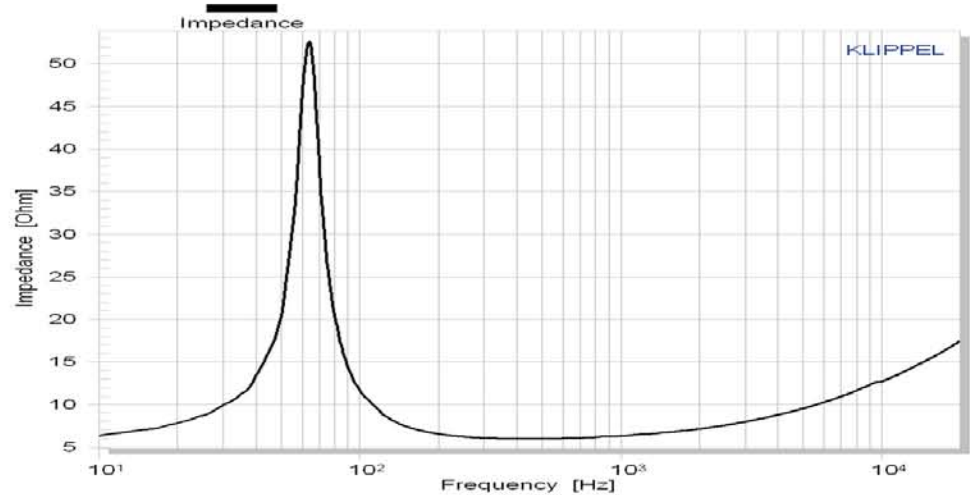
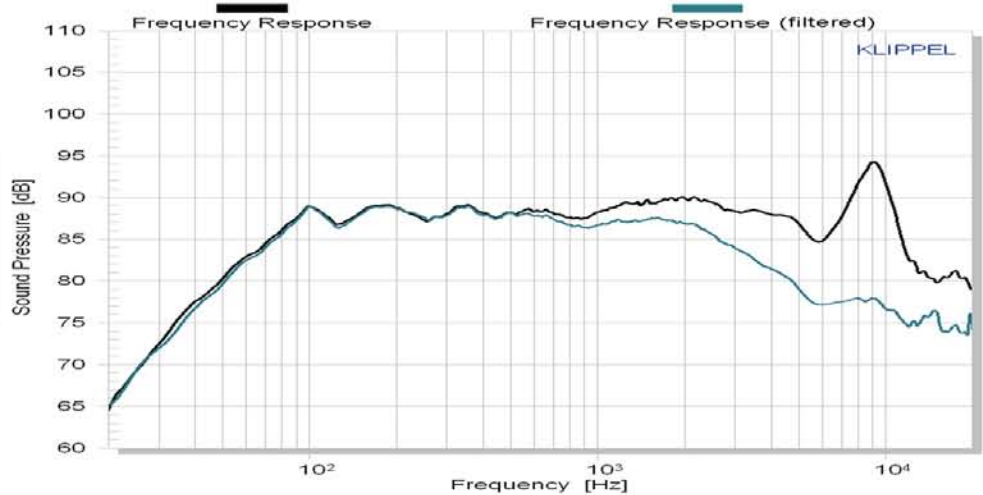
Its novel designed underhung motor does not cover the backside of the dome, eliminating the chance for reflections and energy storage.

A proprietary clamping technique provides easy mounting and adapting to individual front-plates.

The low loss rubber surround and a thin fabric spider center the moving parts with high linearity.

We recommend our C90-6-724 for an application from 60 Hz – 6000 Hz.

CELL[®]
CONCEPT DRIVER



All rights reserved - All data with reservation and subject to change.

Thiel & Partner GmbH

Kantstrasse 1

50259 Pulheim

T +49 (0) 2238 / 475475

a.bankewitz@accuton.com



C90 - 6 - 724
Bass - midrange driver



Mechanical data		
Overall diameter	123.6	mm
Cutout diameter	124	mm
Frontplate depth minimum	8	mm
Overall depth	55	mm
Motor assembly diameter	-	mm
Motor assembly depth	-	mm
Screwdriver required	DIN 7984, 3mm	
Terminal	+ : 6.3 x 0.8 / - : 4.8 x 0.8	mm
Shipping weight / net weight	1.75 / 1.65	kg
Shipping box size	180 / 180 / 240	mm

Thiele/Small Parameters			
Sensitivity (2.83V / 1m)	E	89*	dB
DC-resistance	Re	5.8	Ohm
resonance frequency	Fs	65	Hz
equivalent vol. of air	Vas	5.1	L
mechanical Q	Qms	5.47	
electrical Q	Qes	0.58	
total Q	Qts	0.52	
effective piston area	Sd	81	cm ²
moving mass	Mms	8.9	g
suspension compl.	Cms	0.65	mm/N
mechanical resistance	Rms	0.68	kg x s

Voice Coil data			
Power handling	P	100*	Watt
Linear excursion	Xmax	+/- 4	mm
Voice coil diameter		80	mm
Voice coil former material		Ti	
Voice coil material		Cu	
Voice coil inductance	Le	0.14	mH
Force factor	Bl	6.1	N/A
Motor type		Underhung	
Ferrofluid filling		no	

* See www.accuton.com for exact measurement conditions.

All rights reserved - All data with reservation and subject to change.

Thiel & Partner GmbH Rommerskirchenerstrasse 21 50259 Pulheim T +49 (0) 2238 / 475475 info@accuton.com