

1.1"- 80W Dome Tweeter

LP 90.28/N92 TW 8 Ω

Code Z009160

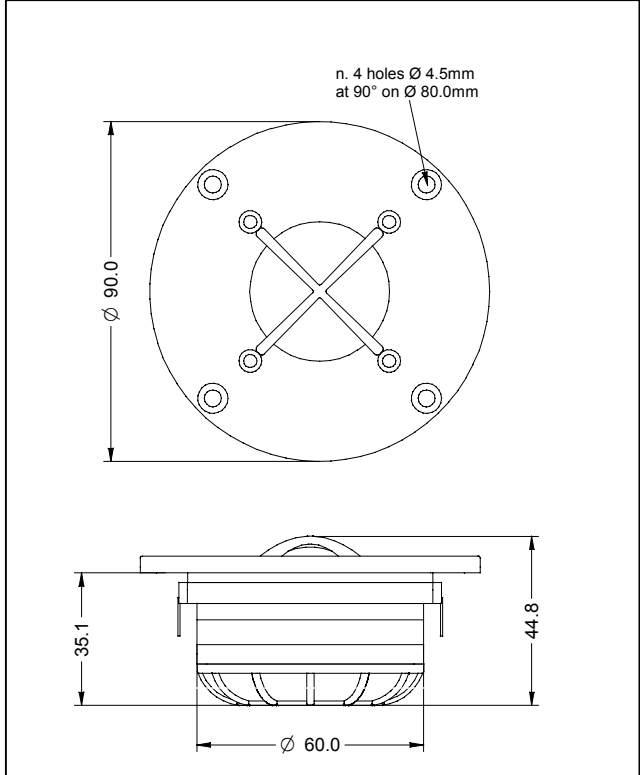
GENERAL CHARACTERISTICS		
Nominal Overall Diameter	90	mm
Nominal Voice Coil Diameter	28	mm
Magnet Weight	92	g
Flux Density.....	1.80	T
Weight	0.41	Kg

THIELE-SMALL PARAMETERS		
Voice Coil DC Resistance	R_E	6.00 Ω
Resonance Frequency	f_s	600 Hz
Mechanical Q Factor.....	Q_{MS}	2.61
Electrical Q Factor.....	Q_{ES}	0.47
Total Q Factor	Q_{TS}	0.39
Mechanical Moving Mass	M_{MS}	0.63 g
Force Factor	$B \times l$	5.37 Wb/m

CONSTRUCTIVE CHARACTERISTICS	
Magnet.....	Neodymium
Voice Coil Winding.....	Aluminium Flat Wire
Voice Coil Former.....	Aluminium
Voice Coil Winding Height	2.7mm
Dome Material.....	Treated Silk
Flange	Aluminium
Air Gap Height.....	3.0mm
Ferrofluid in Air Gap	No

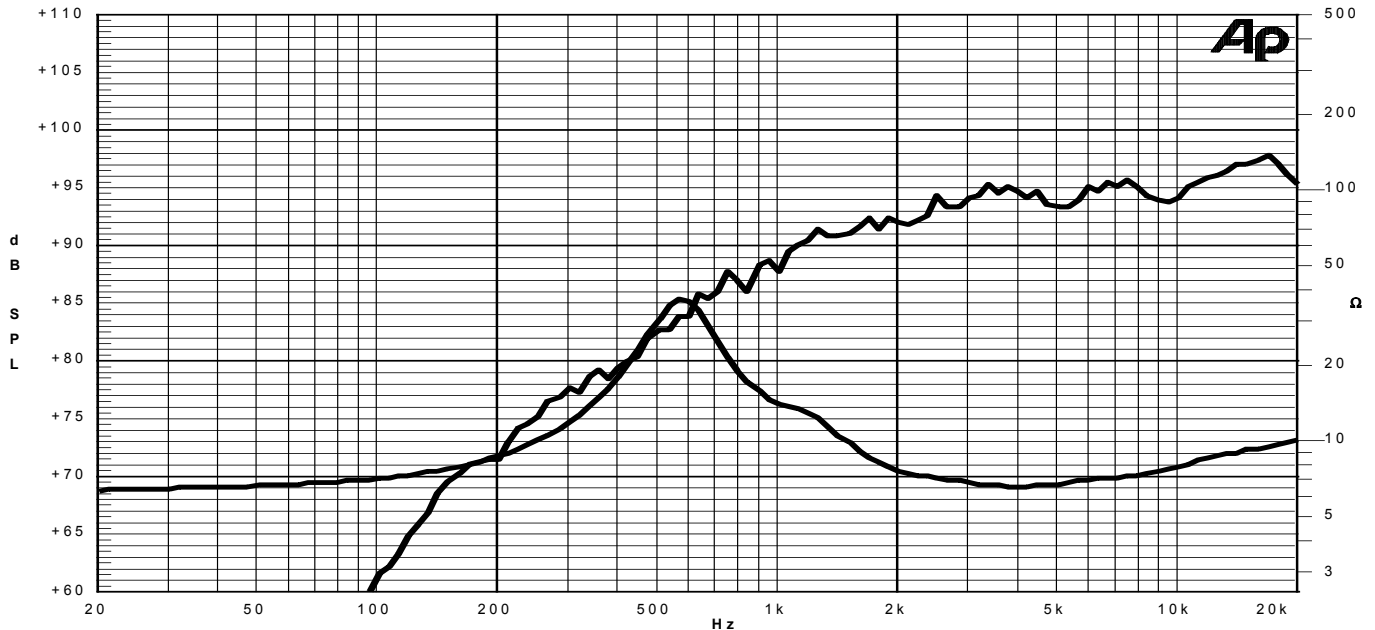
NOTES

ELECTRICAL CHARACTERISTICS	
Nominal Impedance.....	8 Ω
Musical Power	80 W
Rated Power*	40 W
Sensitivity @ 1 W, 1 m	94.4 dB



*rated power measured with 2 hours test with continuous pink noise signal, 6 dB crest factor, HP filter 2.0kHz-12dB/Oct
 Thiele-Small parameters measured with LASER system

Frequency Response on IEC Baffle (DIN 45575) @ 1 W, 1 m - Impedance



Due to continuing product improvement, the features and the design are subject to change without notice.

16/07/09